



# BrowZine


## BrowZine : User Guide

Throughout the BrowZine ecosystem, BrowZine is used to give personalization and customization options. It lets you browse scholarly journals on your computer or mobile device. With the BrowZine app, you can add your favourite journals to your personal bookshelf and save articles to read later.

BrowZine has sorted e-journals into broad subjects and then into narrower disciplines.

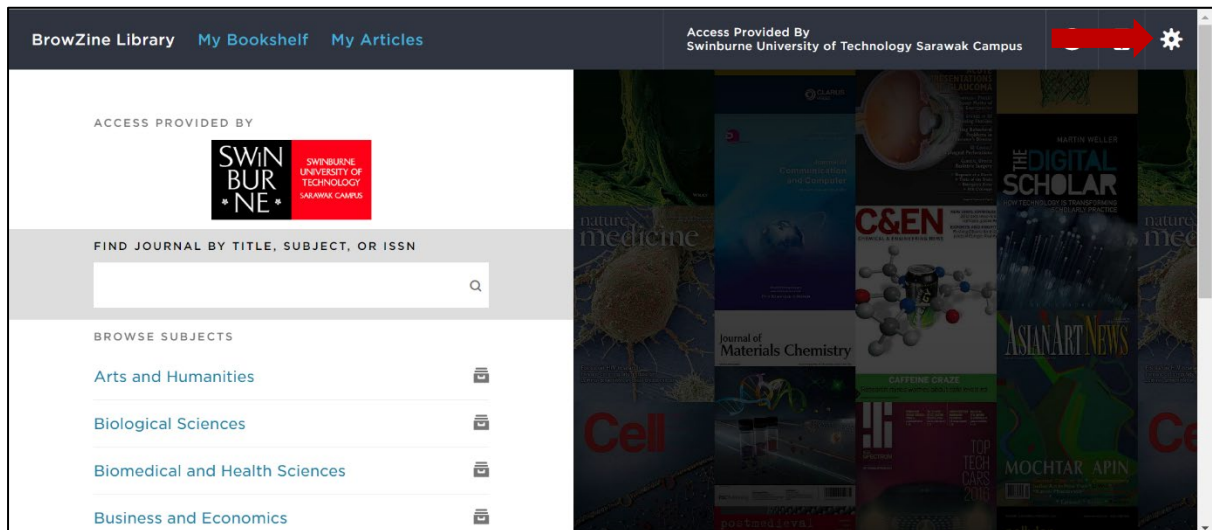
Contact us:

 [library@swinburne.edu.my](mailto:library@swinburne.edu.my)

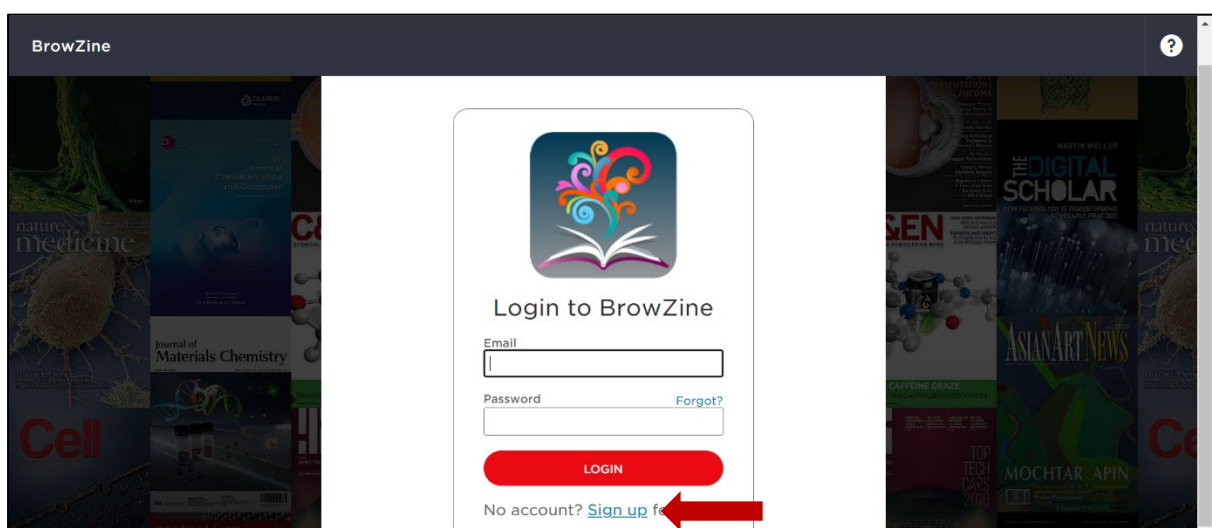
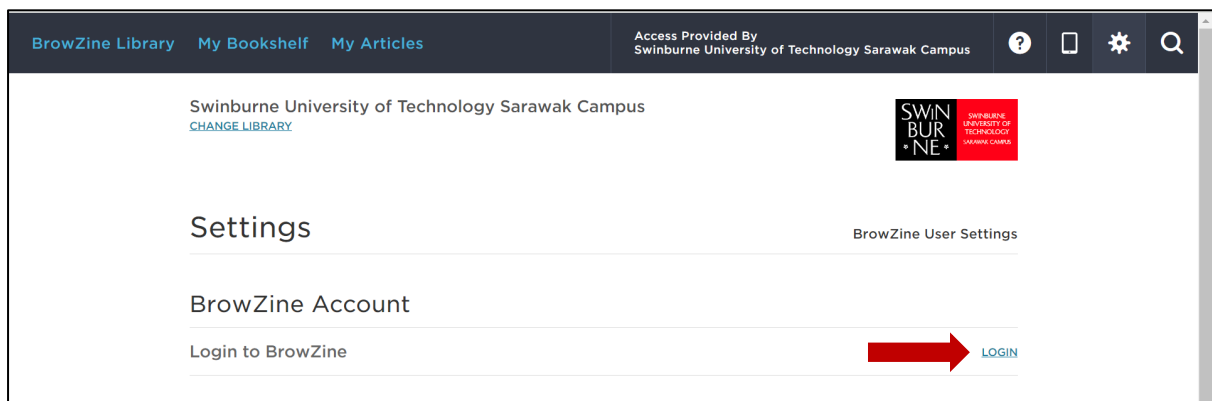
 +6082 - 260936

## Creating BrowZine Account

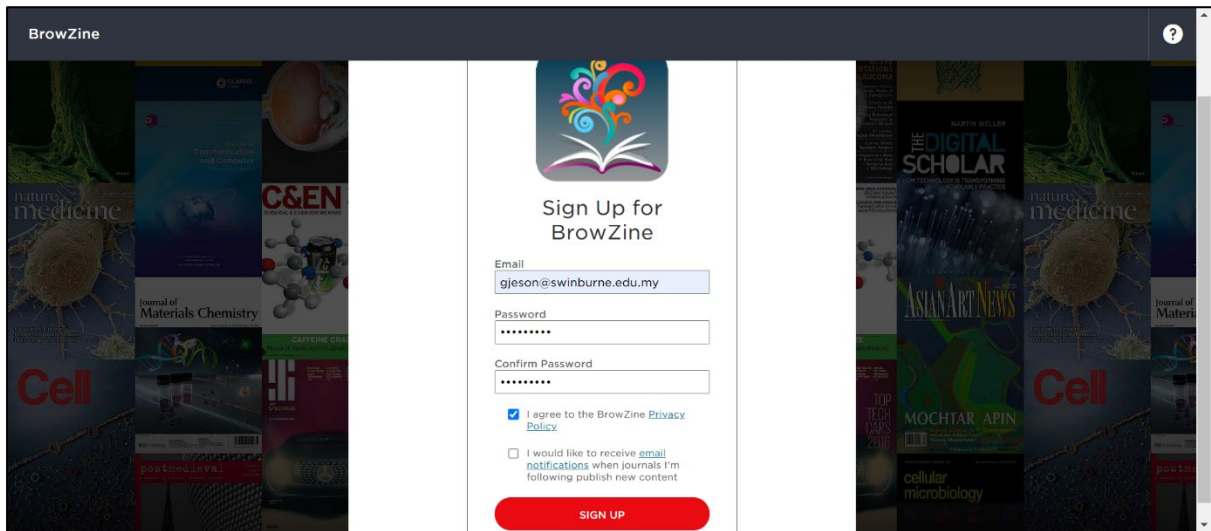
1. Click on the BrowZine [link](#) and this will lead you to BrowZine landing page. Click on the setting's icon.
2. Alternatively, you may access through the Libkey folder via library website; under '[Services for teachers](#)' or '[Services for researchers](#)'.



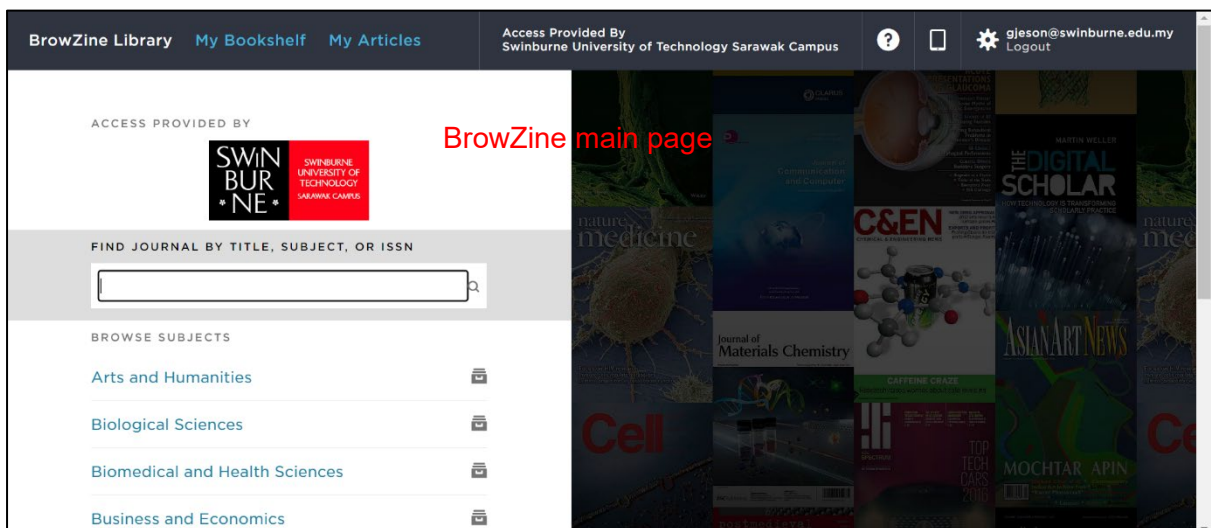
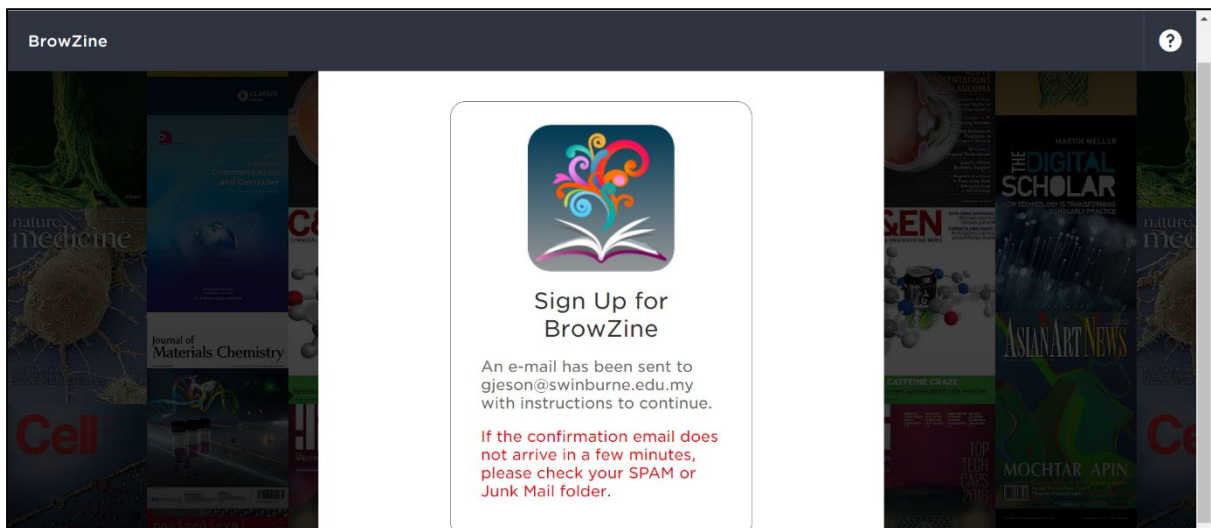
3. From the settings page, click on **Login**, continue click on **Sign up**.



4. Provide your email address, create your password and confirm it accordingly before clicking the 'Sign up' button.

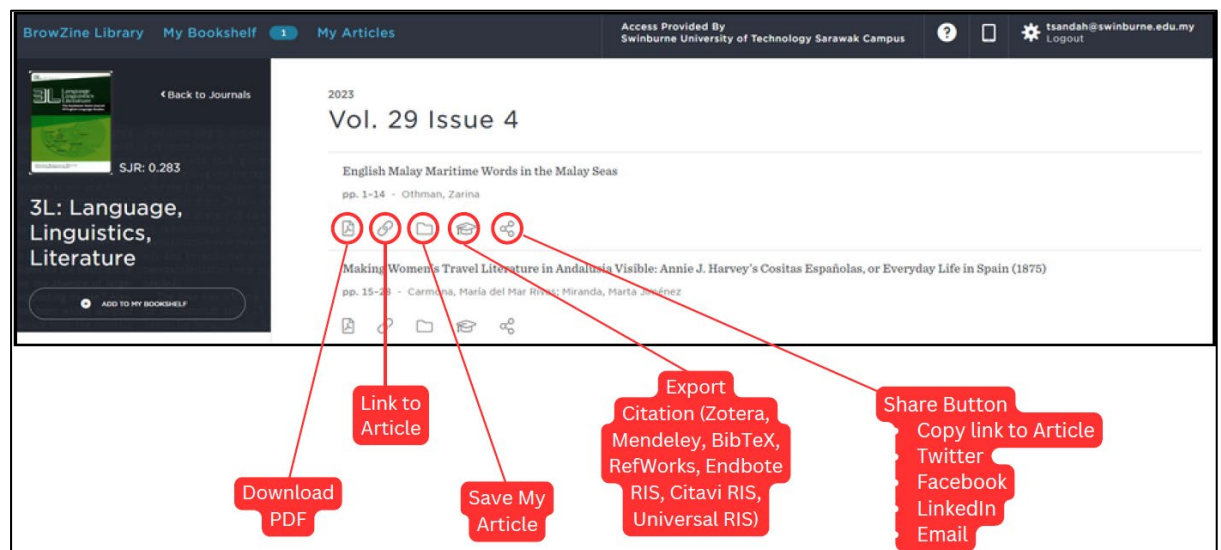
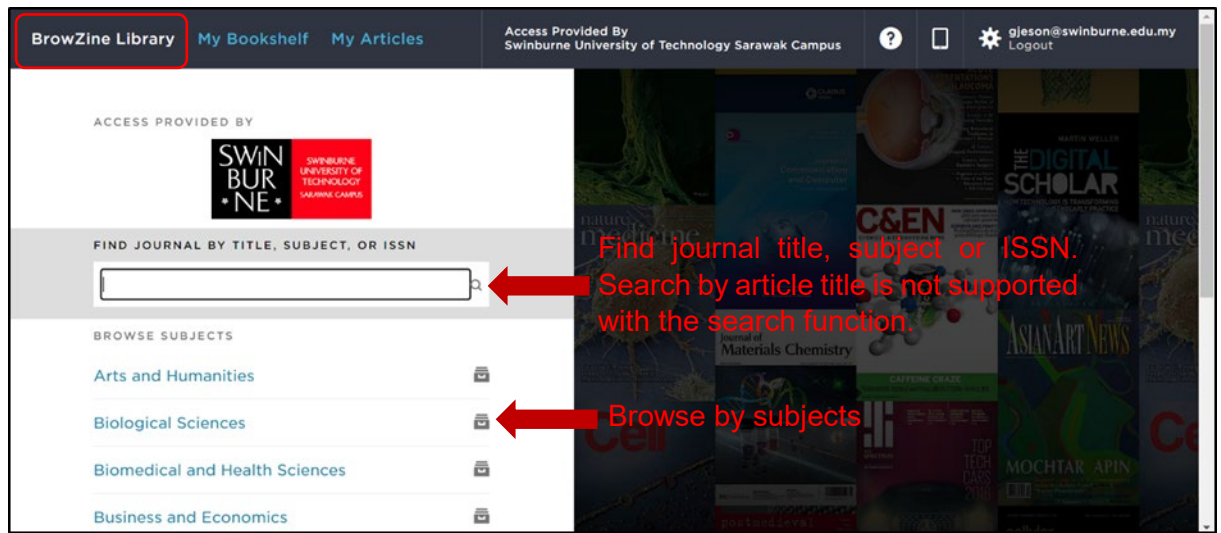


5. Confirm your BrowZine account email address and you will be direct to BrowZine main page below.

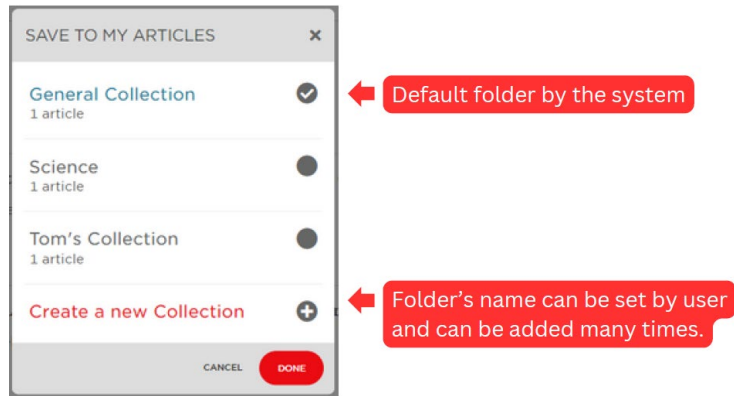


6. There are three key features available from the main page:
- BrowZine Library
  - My Bookshelf
  - My Articles.

## BrowZine Library



- **Download PDF** - To download full-text article in PDF.
- **Link to Article** - It will direct you to the publisher's webpage.
- **Save My Articles** - When saving an article, the folder's name will appear for a selection.



- **Export Citation** - Zotera, Mendeley, BibTeX, RefWorks, Endbote RIS, Citavi RIS, Universal RIS.
- **Share Copy link** - Article, X, Facebook, LinkedIn and Email.



## My Bookshelf

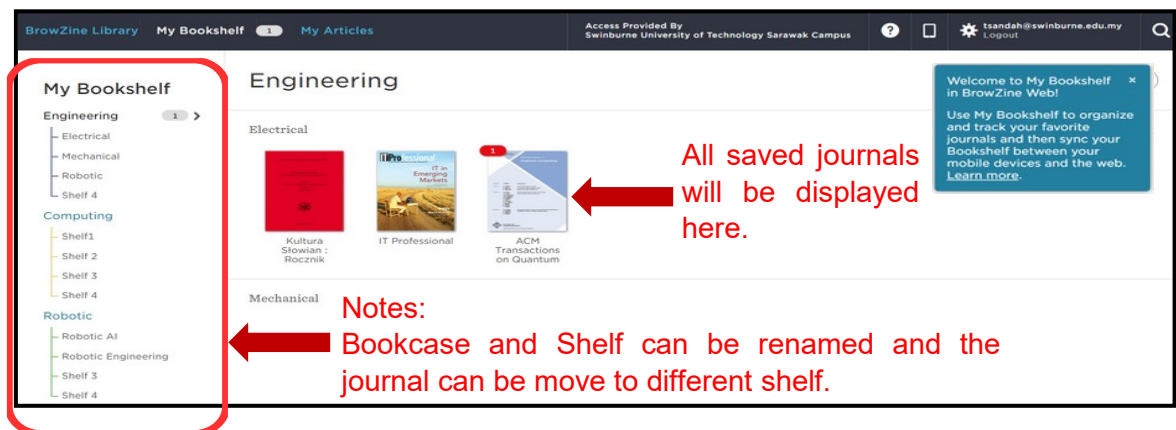
This feature will allow user to:

- Add entire Journal to a personal Bookshelf.



This button will allow user to add this specific entire Journal to their personal Bookshelf.

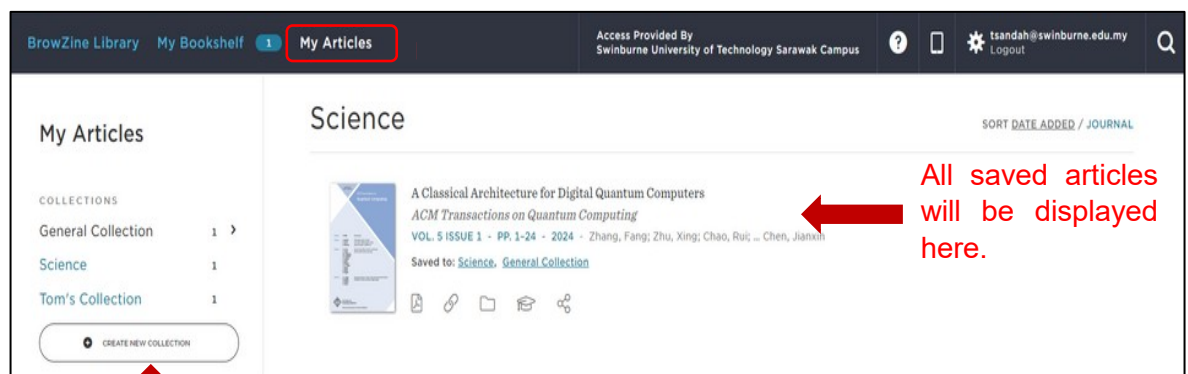
- View all the saved Journals into different subjects.



Notes:  
Bookcase and Shelf can be renamed and the journal can be move to different shelf.

## My Articles

This third function will be used to view all the saved articles.

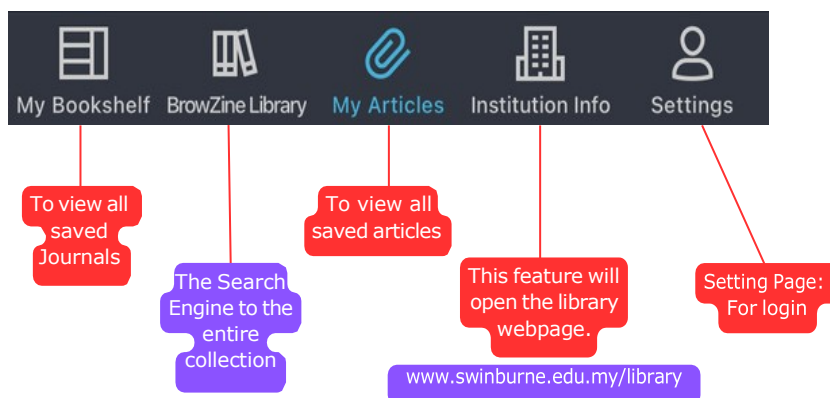


All folders names that created by user can be managed here.

## BrowZine Via App:

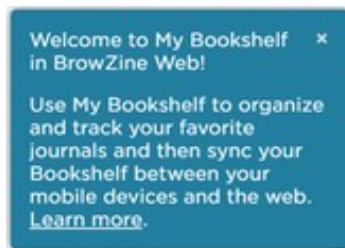
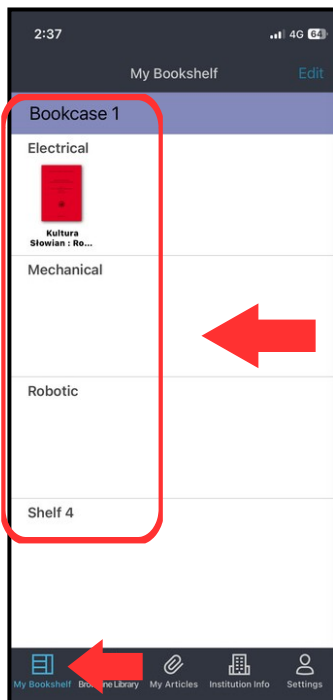


The app is available on iOS and Android versions, free for users to download. The BrowZine app provides 5 features which are similar to the web version.



## My Bookshelf

1. This feature will allow user to view all the saved Journals into different subjects.
2. The function is similar with the web version with a simpler layout.



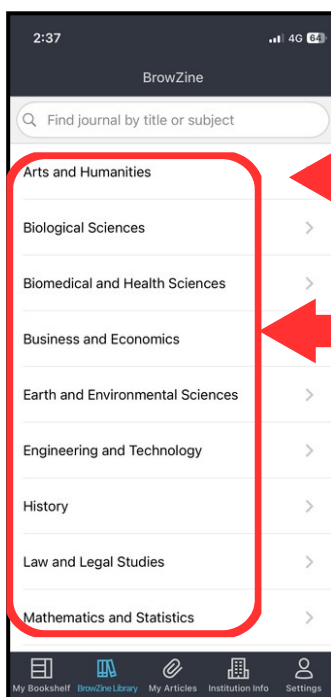
All saved journals will be displayed here.

Notes:

Bookcase and Shelf can be renamed and the journal can be moved to different shelf.

## BrowZine Library

BrowZine Library allows user to search the journal using titles, subject or ISSN. This feature act as a search engine for the resources.

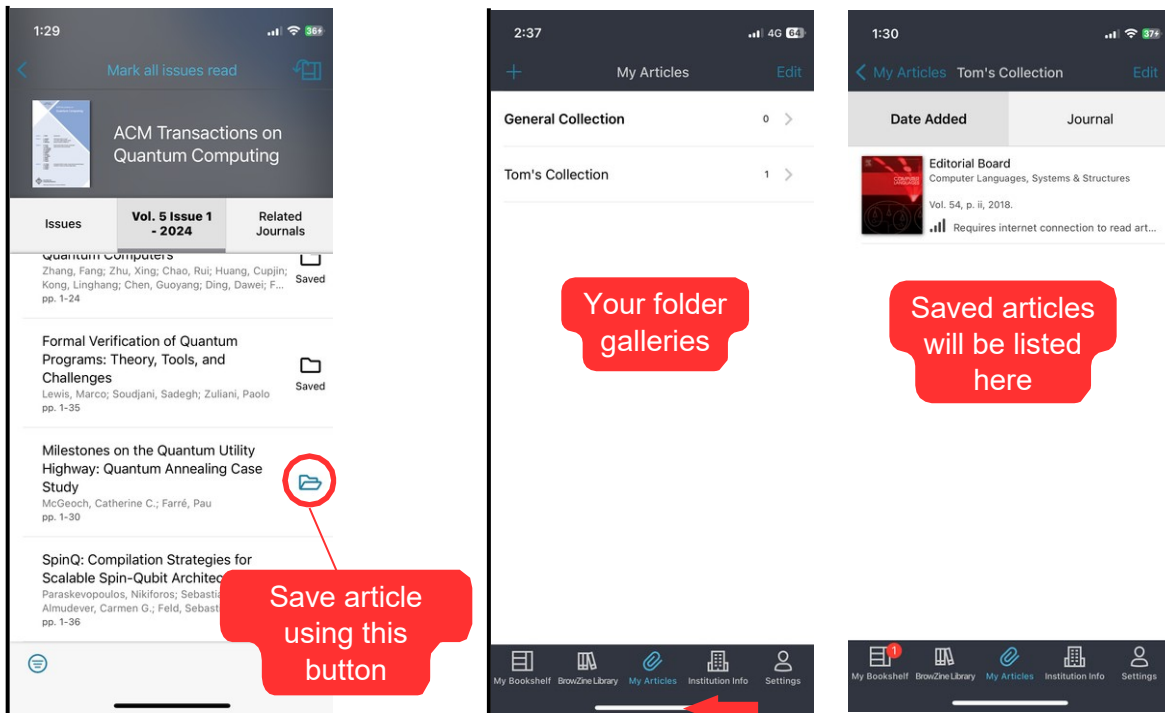


Find journal by title, subject or ISSN.  
Search by article title is not supported  
with the search function.

Browse by subjects

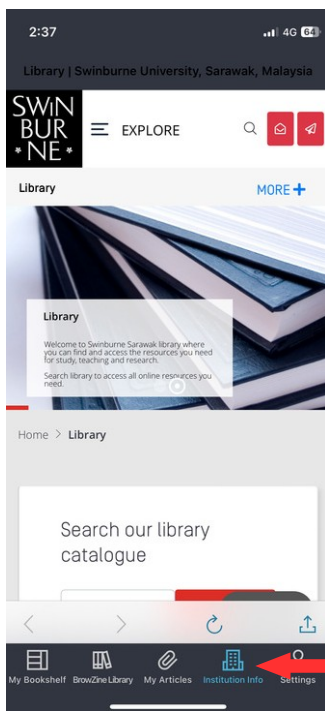


This feature allows you to save the article and view it later.



### Institution Information

This feature will display the Institution's website page: <https://www.swinburne.edu.my/library>



## Setting

This feature will display the 'Settings' page. User can log in to their account using this feature to manage their account or obtain support.

