

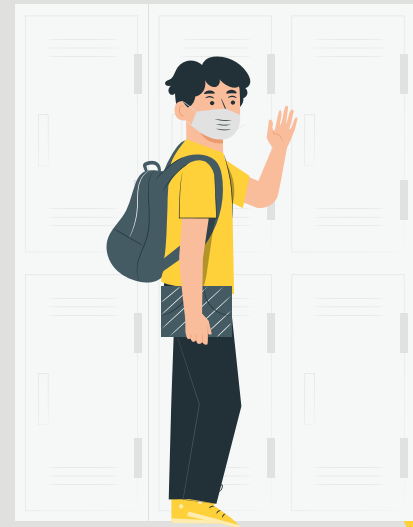
HEALTH DECLARATION FORM

Categories of Contact

Swinburne University of Technology Sarawak Campus has identified the different levels of Contact Categories as shown below. This guideline will be activated in the event that the concerned individual requires quarantine as ordered by health authorities, or to undergo self-quarantine as a precautionary measure.

CATEGORY 1: COVID-19 POSITIVE

An individual who is tested positive for COVID-19 by relevant health authorities.



CATEGORY 2: Quarantine upon entering/ travelling back to Sarawak

- *The individual is classified as Person under Surveillance (PUS) by the authority upon entering/travelling into Sarawak.*
- *The individual shall be required to undergo quarantine by health authorities.*

CATEGORY 3: Identified as Person Under Investigation

- *The individual has FEVER or ACUTE RESPIRATORY INFECTION (sudden onset of respiratory infection with shortness of breath/cough/sore throat) AND*
- *Have traveled to or resided in affected countries in the last 14 days before the onset of illness OR had close contact with a confirmed case of COVID-19 in the last 14 days before the onset of illness.*



CATEGORY 4: Identified as Close Contact

A Person who has been in contact with a confirmed COVID-19 patient and is identified as...



- *Household family members/colleagues who work at the same confined area with the Category 1 individual*
- *Classmates of a Category 1 individual*
- *Have traveled in the same vehicle with a Category 1 individual*
- *Had a face-to-face meeting for more than 15 minutes and within less than 1 meter in an enclosed space with a Category 1 individual*
- *Was in an enclosed, air-conditioned room for more than 2 hours with a Category 1 individual*
- *Rode in the same vehicle with a Category 1 individual and was seated within 2-seat distance.*

An individual who requires quarantine as issued by the health authority due to related medical risks.



CATEGORY 5: Quarantine as per medical advice